

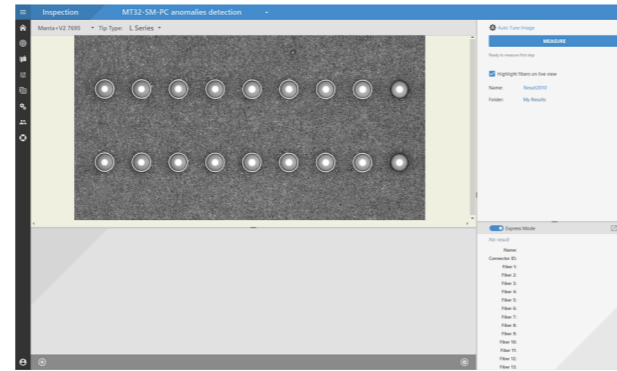
Manta HM or Manta W+ or Manta+v2?



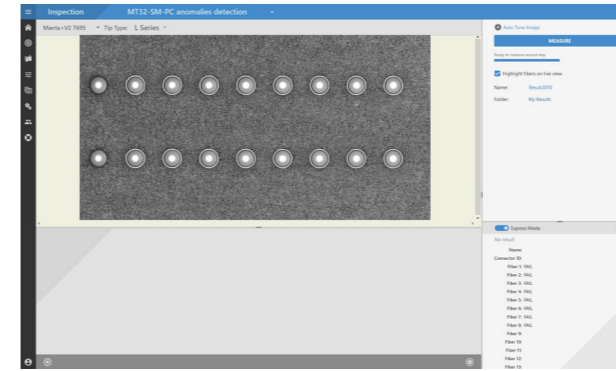
Here's a quick look at the differences when it comes to MPO inspection.

Manta+v2

Half of fibers in one screen = Inspection in three steps

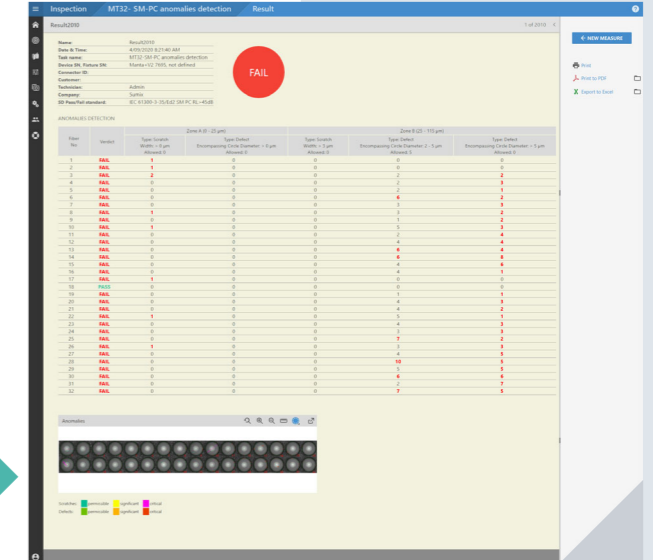


1st step:
Scan the first half of fibers



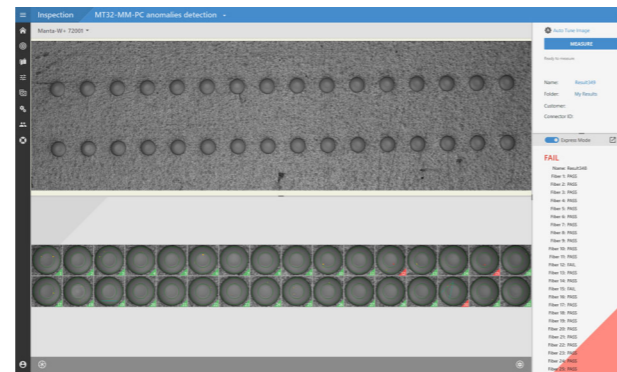
2nd step:
Slide the tip manually

3rd step:
Scan the second half of fibers

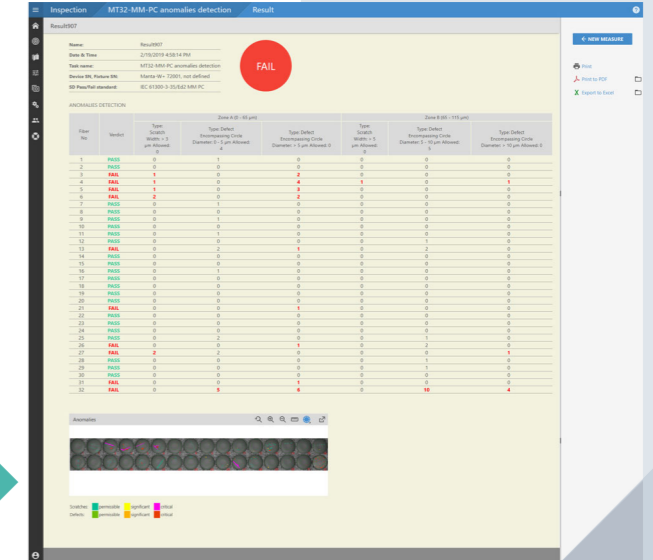


Manta HM and Manta W+

All fibers in one screen = Instant inspection



1st (and the only!) step:
Scan all the fibers at once



Specification

	Manta HM	Manta W+	Manta +v2
Connectors inspected:	MTP®/MPO, MT ferrules, LC, FC, SC, CS®, E2000™, QSFP transceivers, ARINC, MIL-38999 termini, SMA, ODC®, Q-ODC®, MXC®, Avim™, 3M™ Expanded Beam OC, and more		
Application:	handheld for field use; optional cradle for use in desktop applications		
Field of view:	4.2 × 2.8 mm	4.1 × 3.0 mm	2.4 × 1.8 mm
Magnification:	360×	260×	290×
Ease of use for MPO inspection:	★★★★★	★★★★★	★★★★★
Defect size detection:	0.5 μm	0.75 μm	0.75 μm
Optical resolution:	1.5 μm	1.8 μm	1.8 μm
Guide hole inspection capability:	yes	yes	yes
Focus:	auto	auto	auto
Price:	★★★★★	★★★★★	★★★
Power source:	USB 3.0 port of PC	USB 3.0 port of PC	USB 3.0 port of PC
Connects to:	PC, laptop, tablet, Android phone*	PC, laptop, tablet	PC, laptop, tablet
Operating system:	Windows 10	Windows 10	Windows 10

* Currently - Google Pixel 5a or higher

3532 Seagate Way, Suite 100, Oceanside, CA 92056, USA

<https://www.sumix.com>

E-mail: info-team@sumix.com

Tel.: +1 (877) 233-3385